

- Analyses glass constructions non-destructively
- Measures glass thicknesses and spaces between panes
- Detects low-E coatings
- Graphic display of measuring results
- Identifies number, thickness and position of interlayers
- Processes several comparison measurements
- Measuring results can be easily managed on your computer



Available as of now as  
GlassBuddy Plus  
with extended functional  
options!

[www.bohle-group.com](http://www.bohle-group.com)

**GlassBuddy®**  
Measurement Precision by Bohle

# GlassBuddy®. Measurement Precision by Bohle.



The GlassBuddy® from Bohle is the multi-talent for the accurate analysis of flat glass. This practical tool quickly and reliably supplies a multitude of information about the configuration of glass panes. In the past, similar glass analysis required many time-consuming measurements and calculations.

No matter whether single-pane, laminated, laminated glass or laminated units with several glasses, whether installed or not. This also includes monolithic glass and insulating glass with 2 or 3 layers. In seconds the laser technology supplies information about glass thickness, configuration of panes, coatings, interlayers and their location. In just one measuring operation and with an accuracy of 0.1 mm.

GlassBuddy®. Measurement precision by Bohle.

## Glass analysis is so easy with the GlassBuddy®.

In spite of its comprehensive functions, the GlassBuddy® works with just a few buttons. The user guide is intuitive and therefore quick and easy to learn.

After choosing the suitable mode, the glass, simply switch the GlassBuddy® on and position it onto the pane. It doesn't matter whether the glass pane is installed or not. By pressing the start button you start the measurement process. After just a few seconds the results are shown on the display and are furthermore displayed graphically for convenient control of measuring results. The results of up to 99 measurements can easily be stored in the internal memory of the GlassBuddy®. Comparative measurements are also possible: up to five measurements can be used to calculate an average value which is then displayed as your result. This function is especially useful for measuring large insulating glass panes when the measuring results taken at the four corners deviate from each other.



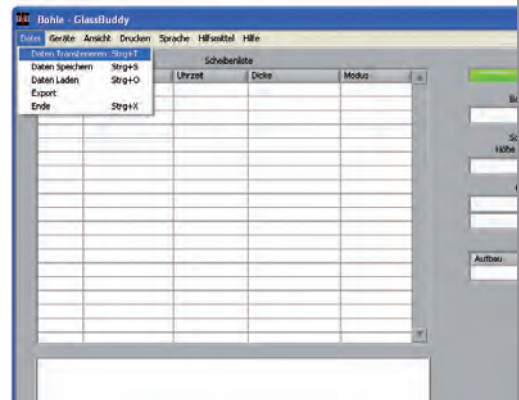
» GlassBuddy® -  
simply precise measurements «

# Convenient data management at your PC

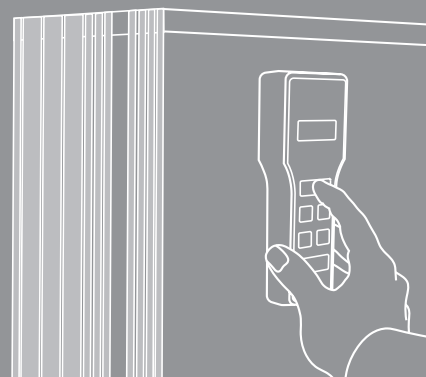
The GlassBuddy® is supplied with computer software which allows it to be connected to a PC or laptop via the provided USB cable. The software is compatible with Microsoft Windows operating systems and allows all the GlassBuddy® measurement data to be easily managed.

## The software enables the following possibilities

- Transfer of all measuring results from the memory of the GlassBuddy® to your PC or laptop
- Tabular display, including date and time of the measurement as well as total thickness of the glass construction
- Allocation of individual comments to each measurement possible
- Display of all details of the individual measurements
- Printing of pane lists, measurement details and comments



» GlassBuddy® -  
convenient management  
of measuring results «



## Included in delivery

- GlassBuddy® (BO 51 647 50 or BO 51 647 60)
- Protective case
- Short instruction manual as print version, detailed instruction manual as file on USB stick
- Software for evaluation and management of data at your PC or laptop
- Micro USB cable for data transfer and battery charging via your PC

### Optional Accessories

- Software upgrade from Basic to Plus version (BO 51 647 61)
- USB power set (BO 51 647 51)

Specification	GlassBuddy Basic	GlassBuddy Plus
Simple glass	yes	yes
Monolithic laminated glass	yes	yes
Monolithic laminated safety glass	yes	yes
Monolithic laminated glazing unit	yes	yes
Monolithic laminated glazing unit as fire resistant glass	no	yes
Insulating glass with 2 layers, made of 2 simple glass panes	yes	yes
Insulating glass with 2 layers, made of monolithic laminated glass	yes	yes
Insulating glass with 2 layers, made of monolithic laminated safety glass	yes	yes
Insulating glass with 2 layers, made of monolithic laminated glazing units	no	yes
Insulating glass with 2 layers, made of monolithic laminated glazing unit as fire resistant glass	no	yes
Insulating glass with 3 layers, made of 3 simple glass panes	yes	yes
Insulating glass with 3 layers, made of monolithic laminated glass	yes	yes
Insulating glass with 3 layers, made of monolithic laminated safety glass	yes	yes
Detection of interlayers	yes	yes
Indication of interlayer position and thickness	yes	yes
Graphical display of measuring results	yes	yes
PC software with graphic display	yes	yes
Software update online	yes	yes
Several languages	yes	yes
Measuring range	max. 50 mm	max. 100 mm
Art. no.	BO 51 647 60	BO 51 647 55

Note: Maximum total gap between panes 60 mm

### Germany

Bohle AG · Head Office  
Dieselstraße 10  
D - 42781 Haan

T +49 2129 5568-0  
F +49 2129 5568-201

export@bohle.de

### United Kingdom and Ireland

Bohle Ltd.  
Fifth Avenue  
Tameside Park · Dukinfield  
Cheshire · SK16 4PP

T +44 161 342 1100  
F +44 161 344 0111

info@bohle.ltd.uk

### South Africa

Bohle Glass Equipment (Pty) Ltd.  
Unit 3, Graphite Industrial Park  
Fabriek Street,  
Strijdom Park 2125, Gauteng

T +27 11 792-6432  
F +27 11 793-5634

info@bohle.co.za

### USA

Bohle America, Inc.  
10924 Granite Street  
Suite 200  
Charlotte, NC 28273

T +1 704 247 8400  
F +1 704 247 8420

info@bohle-america.com