

- Top quality shower door hinge series
- Unique setting of zero position
- For glass shower doors up to 100 cm wide
- One and two-sided glass-to-wall mounting
- Glass-to-glass constructions aligned 180° flush
- Different finishes available



[www.bohle-group.com](http://www.bohle-group.com)

Europe

# Aesthetics and Functionality in the Bathroom



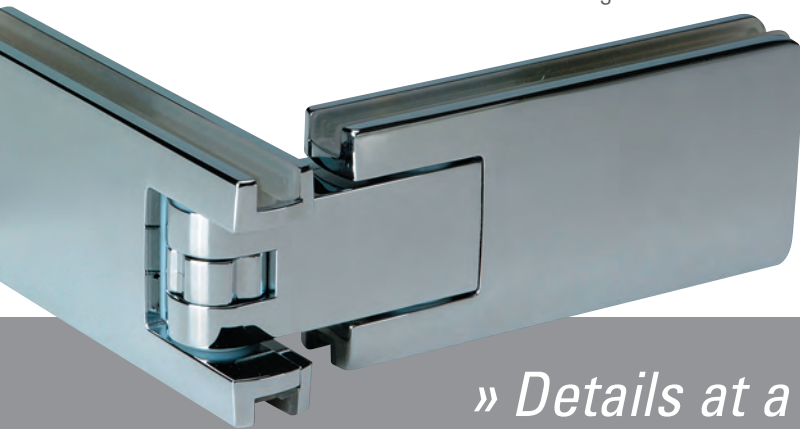
A bathroom is a very personal area. To be able to relax and feel comfortable in a bathroom is just as important as its actual function. Much is expected of today's bathroom furnishings and fixtures: good design, precise and reliable functioning as well as easy cleaning and care. All-glass shower enclosures, often the central element of design-orientated bathrooms in hotels and private homes, meet these expectations – if top quality shower door hinges are used. Because aesthetics are not the only criterion; practical considerations like easy mounting and precise and long-lasting setting of zero position are also important. The Europe series of shower door hinges have been developed by Bohle taking both aspects – aesthetics and functionality – into consideration. And, to ensure highest quality, Europe is produced in Germany.

## Modern Design

Linear and distinct: the design of the Europe series is timeless and fits perfectly in contemporary bathrooms. Well thought-out details like the flush wall attachment meet even highest demands. The narrow gap in the swinging axle of the door significantly reduces the amount of water that can escape, also making cleaning and maintenance easier.

## Numerous Application Possibilities

Hinges of the Europe series can accommodate glass shower doors up to 100 cm wide and 8 mm thick. Glass-to-glass constructions which are 180° flush are also possible. The program, available in finishes shiny chrome-plated, matt chrome-plated and stainless steel look, comprises shower door hinges for one-sided or two-sided glass-to-wall mounting.



### » Details at a Glance «

- For 8 and 10 mm glass
- Rotates 90°
- Adjustable zero position  $\pm 5^\circ$
- Distance glass-to-wall 3 mm
- 40 kg max. door weight when two hinges are used
- 1000 mm max. door width
- All movable parts are maintenance-free and made of rustproof steel
- Available in finishes shiny chrome-plated, matt chrome-plated and stainless steel look

# Easy Mounting

The rubber inserts fit cleanly and do not need to be glued; they rest securely in a groove of the hinge and do not extend over the edge. They act as a protective buffer between the glass and metal.

## Precise and Long-lasting Setting of Zero Position

Once the zero position of conventional shower door hinges has been adjusted and set, it no longer can be re-adjusted. But what if, after being in use for a while, the shower door settles? Europe shower door hinges have a zero position which can easily be adjusted by  $\pm 5^\circ$  and re-set at any time. A hinge-coloured cover conceals all screws neatly and securely.



### One side wall mounted

BO 54 000 00	stainless steel look
BO 54 000 01	shiny chrome plated
BO 54 000 02	matt chrome plated



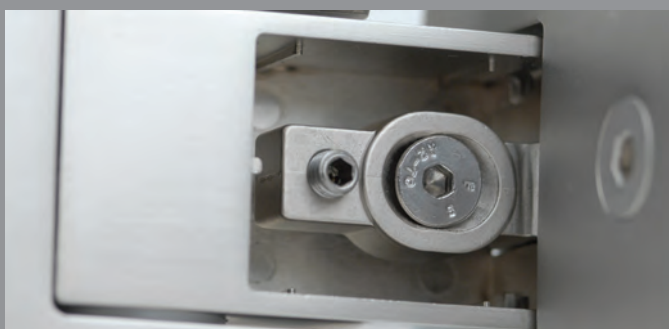
### Both sides wall mounted

BO 54 000 10	stainless steel look
BO 54 000 11	shiny chrome plated
BO 54 000 12	matt chrome plated



### Glass to glass, 180° flush

BO 54 000 20	stainless steel look
BO 54 000 21	shiny chrome plated
BO 54 000 22	matt chrome plated



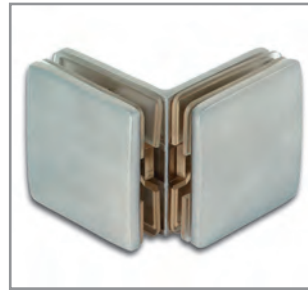
## Corner Clamp glass to wall 90°



For vertical dividing walls · made of brass · for 8 and 10 mm glass thicknesses · dimensions 55 x 55 mm

BO 54 000 70 stainless steel look  
BO 54 000 71 shiny chrome plated  
BO 54 000 72 matt chrome plated

## Corner Clamp glass to glass 90°



For vertical dividing walls · made of brass · for 8 and 10 mm glass thicknesses · dimensions 55 x 55 mm

BO 54 000 80 stainless steel look  
BO 54 000 81 shiny chrome plated  
BO 54 000 82 matt chrome plated

## Wall Clamp glass to wall 90°



For vertical dividing walls · made of brass · for 8 and 10 mm glass thicknesses · dimensions 55 x 55 mm

BO 54 000 60 stainless steel look  
BO 54 000 61 shiny chrome plated  
BO 54 000 62 matt chrome plated

## Reinforcement Bar



Glass to wall · 1200 mm long · for 6 - 10 mm glass

BO 52 136 66 stainless steel look  
BO 52 136 42 shiny chrome plated  
BO 52 136 45 matt chrome plated

## Shower Doorknob · ø 40 mm



Length of handle: 37 mm · double-sided · made of brass · drill hole in glass: ø 12 mm · for glass thicknesses 6 - 10 mm

BO 52 137 50 stainless steel look  
BO 52 137 51 shiny chrome plated  
BO 52 137 52 matt chrome plated

## Shower Door Sealing Strips

A large selection of shower door sealing strips can be found in our catalogue or in the Bohle Online-Shop under [www.bohle.de](http://www.bohle.de).

## Measurement Data Sheets

The measurement data sheets for the different shower types which can use the Europe hinge series can be found in the download area of our internet page. On request we will also be happy to send you the sheets.

## Optimum Protection and Perfect Hygiene with ClearShield®

Soap and shampoo residues as well as lime within the water degrade the appearance and hygiene of a shower enclosure considerably. This can be prevented with the ClearShield® technology. ClearShield® has proven itself on the international market for more than 20 years. It can be used both on new as well as older glass surfaces. After it has been treated with ClearShield®, glass takes on unique properties: it becomes dirt-repellent, very easy to clean and verifiably hygienic.

If you would like to learn more about ClearShield®, please contact your Bohle subsidiary.

### Germany

Bohle AG - Head Office  
Dieselstraße 10  
D-42781 Haan

T +49 2129 5568-0  
F +49 2129 5568-201

[export@bohle.de](mailto:export@bohle.de)  
[www.bohle.de](http://www.bohle.de)

### United Kingdom and Ireland

Bohle Ltd.  
Fifth Avenue  
Tameside Park · Dukinfield  
Cheshire · SK16 4PP

T +44 161 3421100  
F +44 161 3440111

[info@bohle.ltd.uk](mailto:info@bohle.ltd.uk)  
[www.bohle.ltd.uk](http://www.bohle.ltd.uk)

### South Africa

Bohle Glass Equipment (Pty) Ltd.  
Unit 3, Graphite Industrial Park  
Fabriek Street,  
Strijdom Park 2125, Gauteng

T +27 11 792-6432  
F +27 11 793-5634

[info@bohle.co.za](mailto:info@bohle.co.za)  
[www.bohle.co.za](http://www.bohle.co.za)