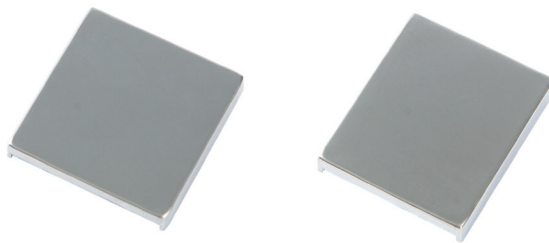


## Bohle Top Channel

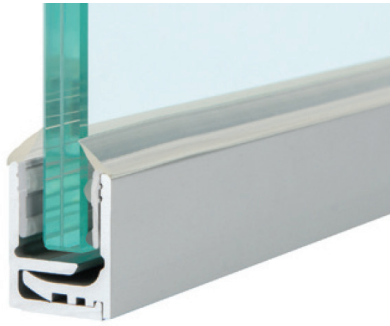
- 1-Piece system for top mount position in combination with 2-Part bottom channel
- Minimal 1-3/16" height to match 2-Part bottom channel
- Three widths available depending on glass thickness:
  - 1) 5/16" - 3/8"
  - 2) 1/2" - 9/16"
  - 3) 11/16" - 7/8"

LENGTH	DESCRIPTION	FOR GLASS THICKNESS	Item
196" (5000 mm)	Top channel, Clear Anodized Finish	1/2" - 9/16"	BO 5201640
94" (2400 mm)	Top channel, Matte Black Finish	1/2" - 9/16"	BO 5201646B
196" (5000 mm)	Top channel, Matte Black Finish	1/2" - 9/16"	BO 5201640B
94" (2400 mm)	Top channel, Satin Stainless Steel Anodized Finish	1/2" - 9/16"	BO 5201647
196" (5000 mm)	Top channel, Satin Stainless Steel Anodized Finish	1/2" - 9/16"	BO 5201641
196" (5000 mm)	Top channel, Clear Anodized Finish	5/16" - 3/8"	BO 5201642
94" (2400 mm)	Top channel, Matte Black Finish	5/16" - 3/8"	BO 5201648B
196" (5000 mm)	Top channel, Matte Black Finish	5/16" - 3/8"	BO 5201642B
94" (2400 mm)	Top channel, Satin Stainless Steel Anodized Finish	5/16" - 3/8"	BO 5201649
196" (5000 mm)	Top channel, Satin Stainless Steel Anodized Finish	5/16" - 3/8"	BO 5201643
196" (5000 mm)	Top channel, Matte Black Finish	11/16" - 7/8"	BO 5201644B
196" (5000 mm)	Top channel, Satin Stainless Steel Anodized Finish	11/16" - 7/8"	BO 5201645
196" (5000 mm)	Top channel, Clear Anodized Finish	11/16" - 7/8"	BO 5201644

## End Caps for Bohle Top and Bottom Glazing System



DESCRIPTION	FOR GLASS THICKNESS	FINISH	Item
End Caps for Bohle 2-Part Channel Profiles	5/16" - 7/16"	Satin	BO 5201755
End Caps for Bohle 2-Part Channel Profiles	5/16" - 7/16"	Matte Black	BO 5201755B
End Caps for Bohle 2-Part Channel Profiles	5/16" - 7/16"	Stainless Steel Effect	BO 5201757
End Caps for Bohle 2-Part Channel Profiles	1/2" - 9/16"	Satin	BO 5201756
End Caps for Bohle 2-Part Channel Profiles	1/2" - 9/16"	Matte Black	BO 5201756B
End Caps for Bohle 2-Part Channel Profiles	1/2" - 9/16"	Stainless Steel Effect	BO 5201758

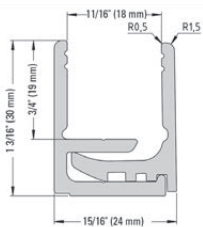


## Bottom 2-Part Channel Glazing System

- 2-Part Channel system for bottom position mounting
- Minimal 1-3/16" height to match 1-Piece top channel
- Easy installation of glass requiring no lift and drop
- Single profile for 5/16" - 27/32" glass thickness range
- The profile width varies according to the ratchet position
- Pre-drilled
- Used with the Bohle Structural Profile Gasket system

LENGTH	DESCRIPTION	Item
94" (2400 mm)	Pre-drilled, Clear Anodized Finish	BO 5201749
94" (2400 mm)	Pre-drilled, Matte Black Finish	BO 5201749B
94" (2400 mm)	Pre-drilled, Satin Stainless Steel Anodized Finish	BO 5201759
118 1/8" (3000 mm)	Pre-drilled, Clear Anodized Finish	BO 5201750
118 1/8" (3000 mm)	Pre-drilled, Matte Black Finish	BO 5201750B
118 1/8" (3000 mm)	Pre-drilled, Satin Stainless Steel Anodized Finish	BO 5201751
196 7/8" (5000 mm)	Pre-drilled, Clear Anodized Finish	BO 5201752
196 7/8" (5000 mm)	Pre-drilled, Matte Black Finish	BO 5201752B
196 7/8" (5000 mm)	Pre-drilled, Satin Stainless Steel Anodized Finish	BO 5201753

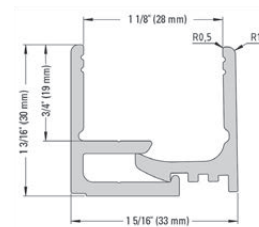
Packaging: 1 set (2 pc profile) - Fasteners provided by others



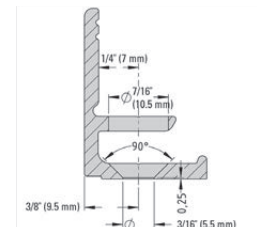
For glass thicknesses 5/16" - 9/16" (8 - 12.76 mm),  
1/8" (3 mm) setting block, BO 51 210 03



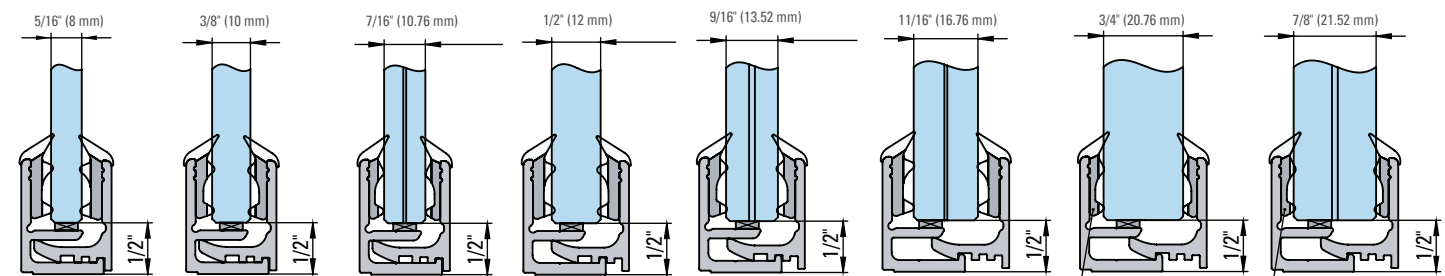
For glass thicknesses 9/16" - 11/16" (15 - 17.52 mm),  
1/8" (3 mm) setting block, BO 51 210 03



For glass thicknesses 7/8" (21.52 mm),  
1/8" (3 mm) setting block, BO 51 210 03



## Gasket for 2-Part Channel Glazing System



Inner: BO 5201715N  
Outer: BO 5201714N

Inner: BO 5201714N  
Outer: BO 5201713N

Inner: BO 5201713N  
Outer: BO 5201713N

Inner: BO 5201715N  
Outer: BO 5201714N

Inner: BO 5201714N  
Outer: BO 5201714N

Inner: BO 5201715N  
Outer: BO 5201715N

Inner: BO 5201714N  
Outer: BO 5201713N

Inner: BO 5201713N  
Outer: BO 5201713N

LENGTH	DESCRIPTION	FOR GASKET THICKNESS	Item
196 7/8" (5000 mm)	Structural Profile Gasket, Clear	0.125" (3 mm)	BO 5201713N
196 7/8" (5000 mm)	Structural Profile Gasket, Clear	0.156" (4 mm)	BO 5201714N
196 7/8" (5000 mm)	Structural Profile Gasket, Clear	0.2" (5 mm)	BO 5201715N

Packaging: 2 pcs